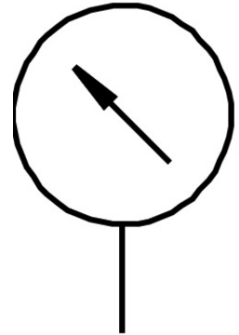


# Pressure gauge MA-15-145-M5-PSI

Part number: 132341

FESTO



## Data sheet

Feature	Value
Display range	0 psi ... 145 psi
Type code	MA
Symbol	00991463
Pressure gauge nominal size	15
Structural design	Bourdon tube pressure gauge without measuring mechanism
Type of mounting	Line installation
Operating medium	Inert gas Neutral liquids
Operating pressure	0 MPa ... 1 MPa
Operating pressure	0 bar ... 10 bar
Operating pressure	0 psi ... 145 psi
Intermittent load factor	0.66
Measurement accuracy class	5
Degree of protection	IP53
Temperature of medium	-20 °C ... 60 °C
Ambient temperature	-20 °C ... 60 °C
Note on materials	RoHS-compliant
Connection position	Centered on rear side
Pneumatic connection	M5
Material of screwed trunnion	Brass
Housing material	Steel
Inspection window material	PC
Housing colour	Black
Product weight	10 g
Information on operating and pilot media	No acetylene No oxygen